

DDL200-SS-EX

SWL 350KG

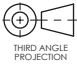
SUITABLE FOR DRUMS
UP TO 220L (600MM X 1010MM)

FRONT FIXED STAINLESS STEEL
CASTOR BRACKETS WITH 100MM
DIAMETER ANTI-STATIC WHEELS

STAINLESS STEEL CONSTRUCTION


REAR BRAKED SWIVEL CASTORS
WITH 100MM DIAMETER
ANTI-STATIC WHEELS

FITTED WITH
EARTHING CHAIN



THIRD ANGLE
PROJECTION

ALL DIMENSIONS
IN mm U.O.S
DO NOT SCALE



STS
RESPICE HANDLING EQUIPMENT LTD
LEEDSTOWN, CORNWALL, TQ27 6DS
TEL: +44 1736 85 10 50 FAX: +44 1736 85 10 23
E-MAIL: SALES@STS-TROLLEYS.CO.UK
WWW: HTTPS://WWW.STS-TROLLEYS.CO.UK

CUSTOMER APPROVAL:

NAME:

SIGNATURE:

DATE:

THIS DOCUMENT AND ALL THE INFORMATION CONTAINED HEREIN ARE CONFIDENTIAL AND EXCLUSIVE PROPERTY OF STS RESPICE HANDLING EQUIPMENT AND MAY NOT BE REPRODUCED, USED, DISCLOSED OR MADE PUBLIC IN ANY MANNER WITHOUT WRITTEN AUTHORIZATION BY STS RESPICE HANDLING EQUIPMENT. THIS DOCUMENT IS ACCEPTED PURSUANT TO AGREEMENT TO THE FOREGOING AND MADE BE RETURNED OR DESTROYED UPON DEMAND.
MANUFACTURER AGREES THAT ARTICLES MADE IN ACCORDANCE WITH THIS DOCUMENT SHALL BE CONSIDERED STS RESPICE HANDLING EQUIPMENT DESIGN AND THAT INDIVIDUAL ARTICLES OR PARTS THEREOF SHALL NOT BE MANUFACTURED FOR THE USE OR SALE BY THE MANUFACTURER OR ANY OTHER PERSON OR ENTITY WITHOUT PRIOR WRITTEN AUTHORIZATION BY STS RESPICE HANDLING EQUIPMENT.

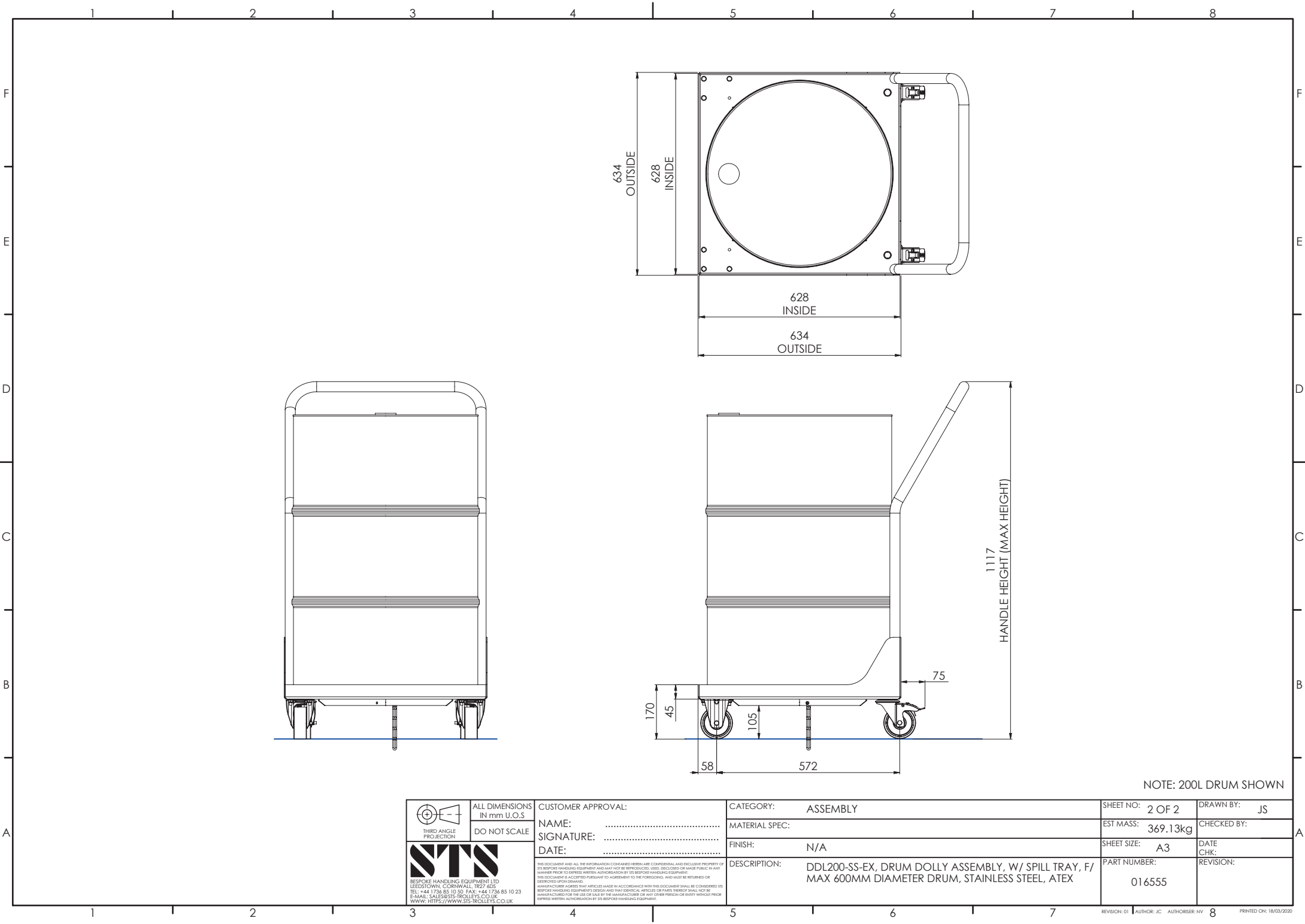
CATEGORY: ASSEMBLY

MATERIAL SPEC:



FINISH: N/A

DESCRIPTION: DDL200-SS-EX, DRUM DOLLY ASSEMBLY, W/ SPILL TRAY, F/ MAX 600MM DIAMETER DRUM, STAINLESS STEEL, ATEX

SHEET NO:	1 OF 2	DRAWN BY:	JS
EST MASS:	369.13kg	CHECKED BY:	
SHEET SIZE:	A3	DATE CHK:	
PART NUMBER:	016555	REVISION:	



NOTE: 200L DRUM SHOWN

 THIRD ANGLE PROJECTION  STIS RESPICE HANDLING EQUIPMENT LTD LEEDSTOWN, CORNWALL, TQ27 6DS TEL: +44 1736 85 10 50 FAX: +44 1736 85 10 23 E-MAIL: SALES@STIS-TROLLEYS.CO.UK WWW: HTTPS://WWW.STIS-TROLLEYS.CO.UK	ALL DIMENSIONS IN mm U.O.S DO NOT SCALE	CUSTOMER APPROVAL: NAME: SIGNATURE: DATE:	CATEGORY: ASSEMBLY MATERIAL SPEC: FINISH: N/A DESCRIPTION: DDL200-SS-EX, DRUM DOLLY ASSEMBLY, W/ SPILL TRAY, F/ MAX 600MM DIAMETER DRUM, STAINLESS STEEL, ATEX	SHEET NO: 2 OF 2 EST MASS: 369.13kg SHEET SIZE: A3 PART NUMBER: 016555	DRAWN BY: JS CHECKED BY: DATE CHK: REVISION:
	<small>THIS DOCUMENT AND ALL THE INFORMATION CONTAINED HEREIN ARE CONFIDENTIAL AND EXCLUSIVE PROPERTY OF STIS RESPICE HANDLING EQUIPMENT AND MAY NOT BE REPRODUCED, USED, DISCLOSED OR MADE PUBLIC IN ANY MANNER PRIOR TO EXPRESS WRITTEN AUTHORIZATION BY STIS RESPICE HANDLING EQUIPMENT. MANUFACTURER AGREES THAT ARTICLES MADE IN ACCORDANCE WITH THIS DOCUMENT SHALL BE CONSIDERED STIS RESPICE HANDLING EQUIPMENT DESIGN AND THAT ORIGINAL ARTICLES OR PARTS THEREOF SHALL NOT BE MANUFACTURED FOR THE USE OR SALE BY THE MANUFACTURER OR ANY OTHER PERSON OR ENTITY WITHOUT PRIOR EXPRESS WRITTEN AUTHORIZATION BY STIS RESPICE HANDLING EQUIPMENT.</small>			SHEET NO: 2 OF 2 EST MASS: 369.13kg SHEET SIZE: A3 PART NUMBER: 016555	DRAWN BY: JS CHECKED BY: DATE CHK: REVISION: