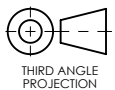
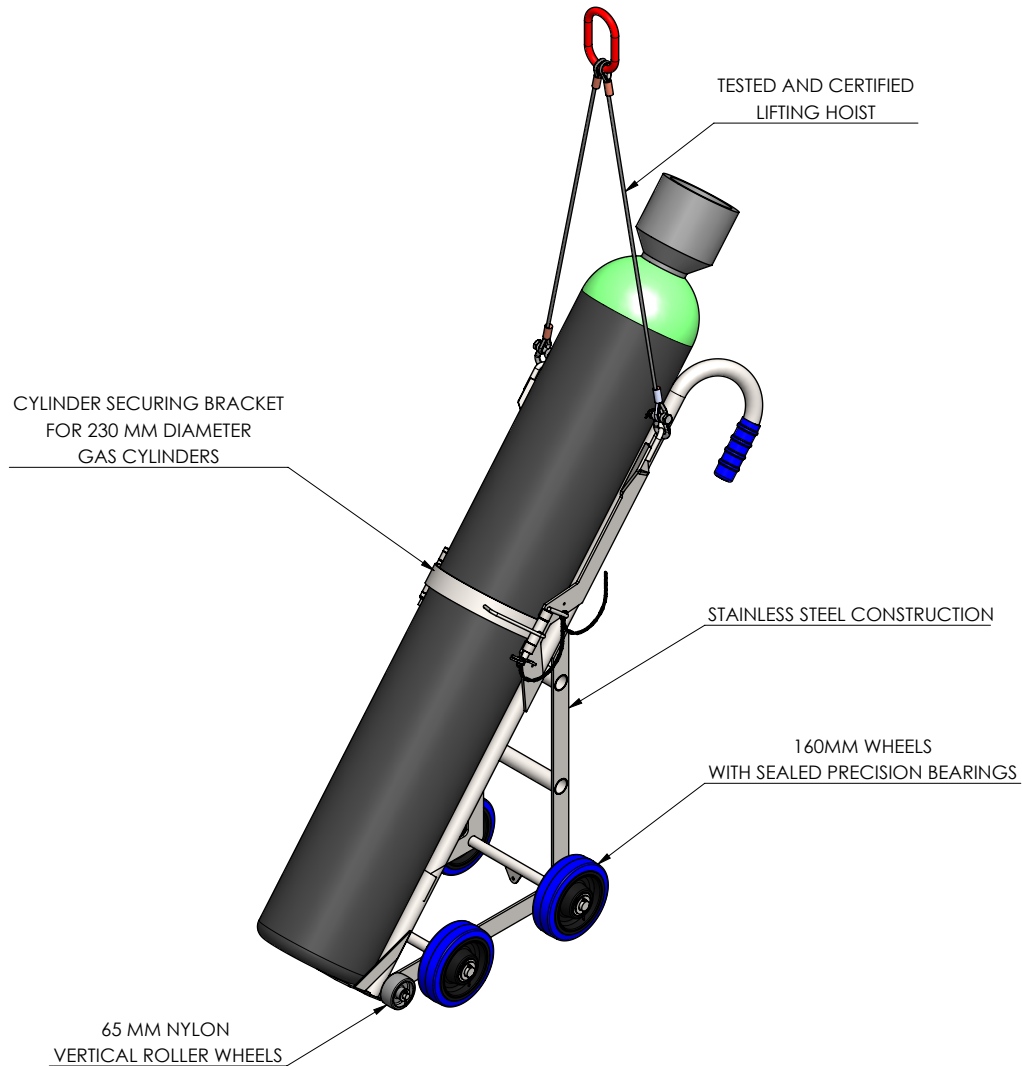


CTS02

SWL - 150kg



THIRD ANGLE PROJECTION

ALL DIMENSIONS
IN mm U.O.S

DO NOT SCALE



BESPOKE HANDLING EQUIPMENT LTD
LEEDSTOWN, CORNWALL TR27 6DS
TEL: +44 1736 85 10 50 FAX: +44 1736 85 10 23
E-MAIL: SALES@STS-TROLLEYS.CO.UK
WWW: [HTTPS://WWW.STS-TROLLEYS.CO.UK](https://www.sts-trolleys.co.uk)

UNLESS OTHERWISE SPECIFIED THE FOLLOWING APPLY:
FABRICATED COMPONENTS DIMENSIONAL PRECISION
DECIMAL METRIC IMPERIAL ANGLE
0.0 ±1.20mm ±0.05" ±0.50" SIZE ≤ 1000MM
0.0 ±0.80mm ±0.03" ±0.25" SIZE ≤ 1000MM
0.0 ±2.5mm ±0.10" ±0.50" SIZE > 1000MM
0.0 ±1.5mm ±0.06" ±0.25" SIZE > 1000MM
STANDARD SURFACE FINISH RA 63MM [RA 250MIN]
BREAK ALL SHARP CORNERS AND EDGES, R 0.3mm MAX

THIS DOCUMENT AND ALL THE INFORMATION CONTAINED HEREIN ARE CONFIDENTIAL AND EXCLUSIVE PROPERTY OF STS BESPOKE HANDLING EQUIPMENT AND MAY NOT BE REPRODUCED, USED, DISCLOSED OR MADE PUBLIC IN ANY MANNER PRIOR TO EXPRESS WRITTEN AUTHORIZATION BY STS BESPOKE HANDLING EQUIPMENT.
THIS DOCUMENT IS ACCEPTED PURSUANT TO AGREEMENT TO THE FOREGOING, AND MUST BE RETURNED OR DESTROYED UPON DEMAND.
MANUFACTURER AGREES THAT ARTICLES MADE IN ACCORDANCE WITH THIS DOCUMENT SHALL BE CONSIDERED STS BESPOKE HANDLING EQUIPMENT'S DESIGN AND THAT IDENTICAL ARTICLES OR PARTS THEREOF SHALL NOT BE MANUFACTURED FOR THE USE OR SALE BY THE MANUFACTURER OR ANY OTHER PERSON OR ENTITY WITHOUT PRIOR EXPRESS WRITTEN AUTHORIZATION BY STS BESPOKE HANDLING EQUIPMENT.

CATEGORY: ASSEMBLY

MATERIAL SPEC:

FINISH: N/A

DESCRIPTION: CYLINDER TROLLEY, CTS02, ASSEMBLY

SHEET NO: 1 OF 2

EST MASS: 18.51kg

SHEET SIZE: A4

PART NUMBER:

012562

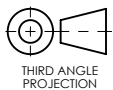
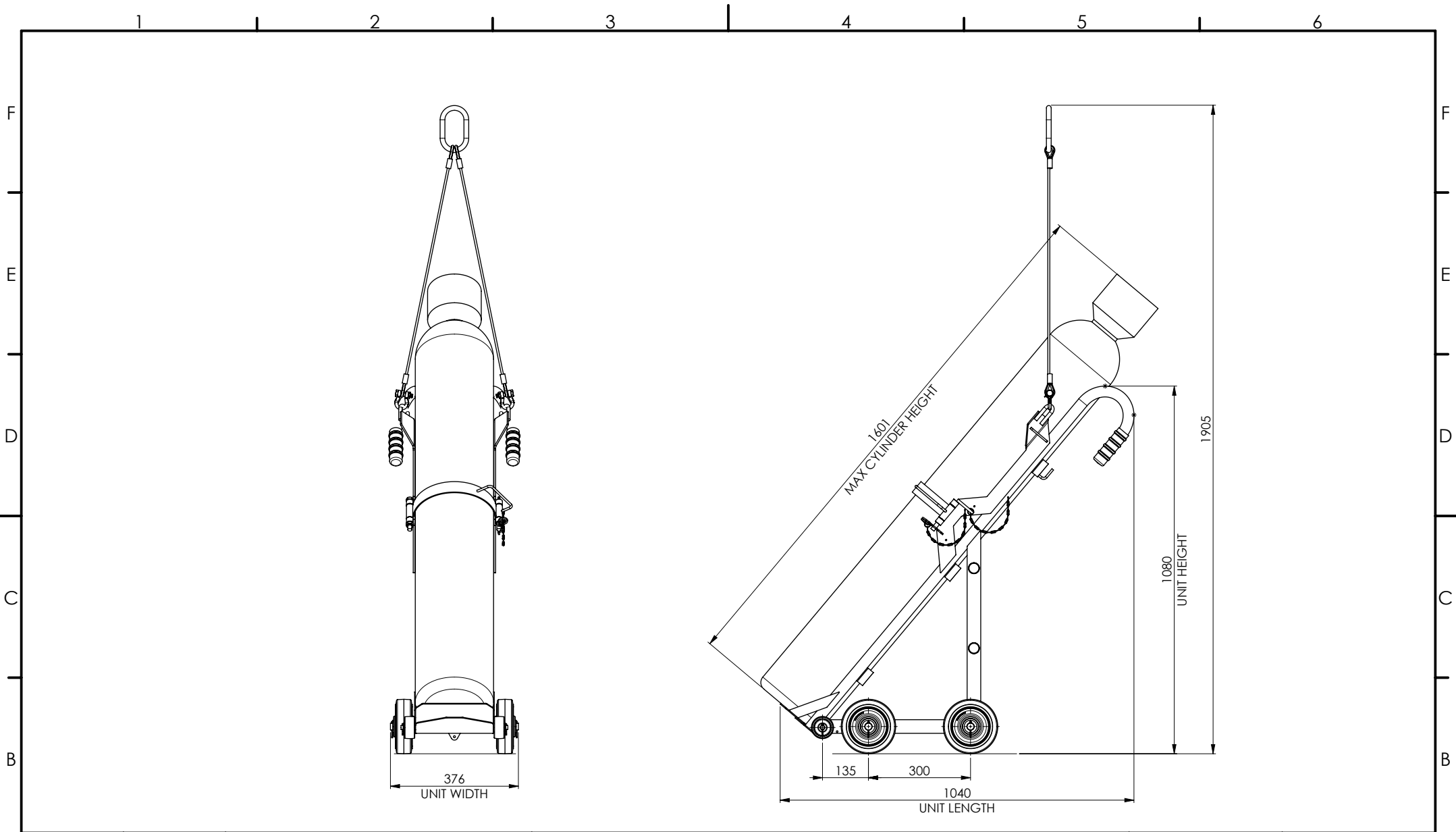
DRAWN BY: JC

CHECKED BY: JC

DATE CHK: 20/12/2022

REVISION:

F



THIRD ANGLE
PROJECTION

ALL DIMENSIONS
IN mm U.O.S

DO NOT SCALE



BESPOKE HANDLING EQUIPMENT LTD
LEEDSTOWN, CORNWALL TR27 6DS
TEL: +44 1736 85 10 50 FAX: +44 1736 85 10 23
E-MAIL: SALES@STS-TROLLEYS.CO.UK
WWW: HTTPS://WWW.STS-TROLLEYS.CO.UK

UNLESS OTHERWISE SPECIFIED THE FOLLOWING APPLY:
FABRICATED COMPONENTS DIMENSIONAL PRECISION
DECIMAL METRIC IMPERIAL ANGLE
0.1 ±1.20mm ±0.05" ±0.50° SIZE ≤ 1000MM
0.0 ±0.80mm ±0.03" ±0.25° SIZE ≤ 1000MM
0.0 ±2.5mm ±0.10" ±0.50° SIZE > 1000MM
0.0 ±1.5mm ±0.06" ±0.25° SIZE > 1000MM
STANDARD SURFACE FINISH RA 63MM [RA 250MIN]
BREAK ALL SHARP CORNERS AND EDGES, R 0.3mm MAX

THIS DOCUMENT AND ALL THE INFORMATION CONTAINED HEREIN ARE CONFIDENTIAL AND EXCLUSIVE PROPERTY OF STS BESPOKE HANDLING EQUIPMENT AND MAY NOT BE REPRODUCED, USED, DISCLOSED OR MADE PUBLIC IN ANY MANNER PRIOR TO EXPRESS WRITTEN AUTHORIZATION BY STS BESPOKE HANDLING EQUIPMENT.
THIS DOCUMENT IS ACCEPTED PURSUANT TO AGREEMENT TO THE FOREGOING, AND MUST BE RETURNED OR DESTROYED UPON DEMAND.
MANUFACTURER AGREES THAT ARTICLES MADE IN ACCORDANCE WITH THIS DOCUMENT SHALL BE CONSIDERED STS BESPOKE HANDLING EQUIPMENT'S DESIGN AND THAT IDENTICAL ARTICLES OR PARTS THEREOF SHALL NOT BE MANUFACTURED FOR THE USE OR SALE BY THE MANUFACTURER OR ANY OTHER PERSON OR ENTITY WITHOUT PRIOR EXPRESS WRITTEN AUTHORIZATION BY STS BESPOKE HANDLING EQUIPMENT.

CATEGORY: ASSEMBLY

MATERIAL SPEC:

FINISH: N/A

DESCRIPTION: CYLINDER TROLLEY, CTS02, ASSEMBLY

SHEET NO: 2 OF 2

EST MASS: 18.51kg

SHEET SIZE: A4

PART NUMBER:

012562

DRAWN BY: JC

CHECKED BY: JC

DATE
CHK: 20/12/2022

REVISION:

F